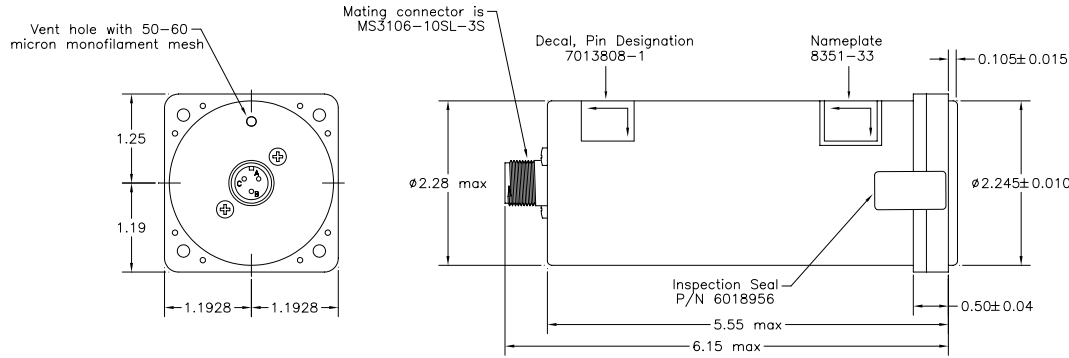


Configurations					
Dash #	Ball Cage	Ball Color	Ball Background	Text	Doghouse
Basic	White	Black	White	2 MIN. TURN D.C. ELEC.	Yes

Revisions				
ECO	Rev.	Description	Date	Appr.
273	A	Redraw to MCI stds. Add light wiring for 2 bulbs. Note 2) was "Slip indicator ball is white...". Add turn sensitivity table for single deflection.	9-12-95	SH
485	B	Basic config. was white ball, black background.	1/14/97	ScH
548	C	Weight was typo of 104 lbs.	4/25/97	ScH
714	D	Add pinout. Add gryo decal. Move inspection seal. Update numerous dimensions. Ball color was 37038. Weight was 1.5 lbs.	10/23/97	ScH
827	E	Move vent hole.	3/10/98	ScH
3602	F	Add nameplate P/N, relocate insp. seal, delete Caution decal.	12/15/03	ScH/JBR



Pin	Signal Description
A	14 VDC
B	Common
C	Lighting

Notes:

- Dial and pointer marking to be flat white per FED-STD-595 color #37875, on flat black background per FED-STD-595 color #37038.
  - Color of black slip indicator ball per FED-STD-595 color #17038.
  - Approved for manufacture per FAA-TSO-C3b.
  - Exterior surfaces to be painted flat black per FED-STD-595 color #37038.
- ⚠ Lighting is customer option: 5, 14, or 28 volts.  
 5 Volt Light Tray P/N 7011406-5.  
 14 Volt Light Tray P/N 7011406-14.  
 28 Volt Light Tray P/N 7011406-28.

This document discloses proprietary information of Mid-Continent Instrument Co., Inc. It may be reproduced or disclosed only with written permission of General Design/Mid-Continent Instrument Co., Inc. and is not to be used in any way detrimental to the interests of Mid-Continent Instrument Co., Inc.

**SPECIFICATIONS**

**Electrical**

	<u>Min.</u>	<u>Max.</u>
Voltage:	11.6 VDC	15.8 VDC
Current (Running):	---	1.0 A
Current (Starting):	---	1.10 A
Warning Flag:	10.6 VDC	11.6 VDC
Dielectric strength to case:	---	500 VDC (1 min.)

**Characteristics**

	<u>Min.</u>	<u>Max.</u>
Starting Time:	---	3 min.
Weight:	---	1.4 lbs.
Life:	1500 hrs.	---

**Indication Sensitivity (Double Deflection)**

	<u>Turn Rate</u>	<u>Min.</u>	<u>Max.</u>
0°/min	0	in.	0.015 in.
90°/min	0.125	in.	0.187 in.
180°/min	0.282	in.	0.344 in.
360°/min	0.437	in.	0.687 in.

**Indication Sensitivity (Single Deflection)**

	<u>Turn Rate</u>	<u>Min.</u>	<u>Max.</u>
0°/min	0	in.	0.015 in.
90°/min	0.047	in.	0.109 in.
180°/min	0.125	in.	0.187 in.
360°/min	0.250	in.	0.374 in.

**Damping Sensitivity**

**Turn Indicator (Air Dashpot)**

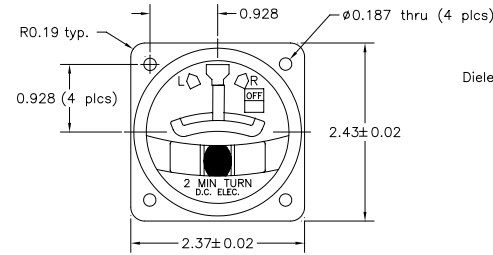
Time from full deflection to zero with no overshoot:	<u>Min.</u>	<u>Max.</u>
	2 sec.	4 sec.

**Slip Indicator (Fluid)**

Time for ball movement from -12° slip angle to +12° slip angle:	<u>Min.</u>	<u>Max.</u>
	0.2 sec.	4.0 sec.

**Environmental**

	<u>Min.</u>	<u>Max.</u>
Temperature Range (Survival):	-65°C	+70°C
Temperature Range (Operating):	-30°C	+50°C
Altitude Range (Operating):	-1000 ft.	52,000 ft.



Unless otherwise specified: All dimensions are in inches Tolerance: Fractional = ±1/16 .xx = ±.015 .xxx = ±.005 .xxxx = ±.002 Angular = ±0.5° Concentricity: .005 TIR Break all sharp edges Threads per MIL-S-7742 Surface roughness: 125	DRAWN	S. Haines	12-23-94
	APPROVED	RF	03/10/98
TOPLEVEL ASSY:	36002-1		
USED ON:			
END ITEM:	N3L		
CODE IDENT. NUMBER:	59742		

<b>GENERAL DESIGN</b>	
DIVISION OF MID-CONTINENT INSTRUMENT COMPANY	
TITLE: Indicator, 14V Turn & Slip	PART NUMBER: 5550-8340N3L
SCALE: None	SHEET 1 of 1