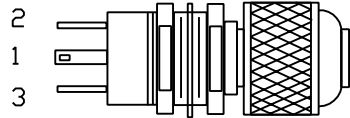
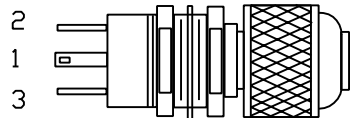


Lone Star Aviation, Inc.
 604 S. Wisteria Street
 Mansfield, Texas 76063
 682-518-8882
 682-518-8831 fax

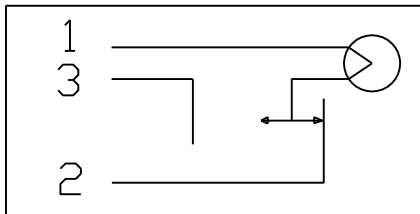
REVISION BLOCK					
REV	ECN #	ZONE	DESCRIPTION OF CHANGE(s)	DATE	APPROVED
REV-0			Initial Release	8-20-10	JRM



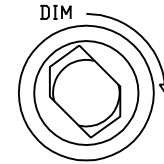
INSTALLATION 1:
 This install method will allow current to flow freely until the Press-to-test button is depressed, momentarily severing its connection to ground.



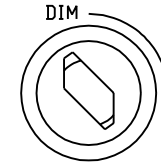
INSTALLATION 2:
 This install method removes any connection to ground until the Press-to-test button is depressed, completing the circuit.



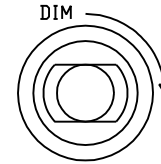
OPTIONAL LENS COLORS:
 Red
 Green
 Amber
 Blue (Special Order)
 Clear (Special Order)



Shutters Open
 Maximum full
 direct light beam



Shutters Adjusted
 Adjustable direct
 light beam



Shutters Closed
 Minimum indirect
 "halo" light

Specifications:

Aluminum Body
 Bulb: T1 3/4
 MIL-L-7961B
 MIL-L-3661
 FAA-PMA Bulb (Optional)


Hole Panel Dimension



Maximum Panel Thickness 5/16"

PART NUMBERS:
 LS03-07100-14
 LS03-07100-28
 LS03-07100F-28
 LS03-07101-14
 LS03-07101-28
 LS03-07101F-28
 LS03-07102-14
 LS03-07102-28
 LS03-07102F-28

DESCRIPTION:
 Press to test 14V, RED
 Press to test 28V, RED
 Press to test 28V, RED FAA-PMA
 Press to test 14V, GREEN
 Press to test 28V, GREEN
 Press to test 28V, GREEN FAA-PMA
 Press to test 14V, AMBER
 Press to test 28V, AMBER
 Press to test 28V, AMBER FAA-PMA

ITEM #	QTY.	PART NO.	DESCRIPTION
UNLESS NOTED OTHERWISE TOLERANCE BLOCK: DIMENSIONS ARE IN INCHES DECIMALS ±1° ANGULAR XX ±.030 XXX ±.015 XXXX ±.0005 DO NOT SCALE DRAWING			PROPRIETARY THIS DOCUMENT AND THE DATA DISCLOSED HEREWITH IS NOT TO BE REPRODUCED, USED, OR DISCLOSED IN WHOLE OR IN PART TO ANYONE WITHOUT WRITTEN AUTHORIZATION FROM LONE STAR AVIATION, INC
APPROVALS		DATE	 LONE STAR AVIATION CORP. <small>Mansfield, Texas</small>
DRAWN BY		8-20-10	
MATERIAL		Alum 5052, .063	APPROVED BY
FINISH		NOTE 1	DATE
NEXT ASSY.			SCALE
			NONE
			COMP. FILE
			SHEET 1 OF 1
TITLE			Panel Indicator Dimming PTT
DRAWING NO.		REV	
A LS03-07100		0	

Dwg. No. LS03-07100
 SH. 1 of 1
 REV. REV-0