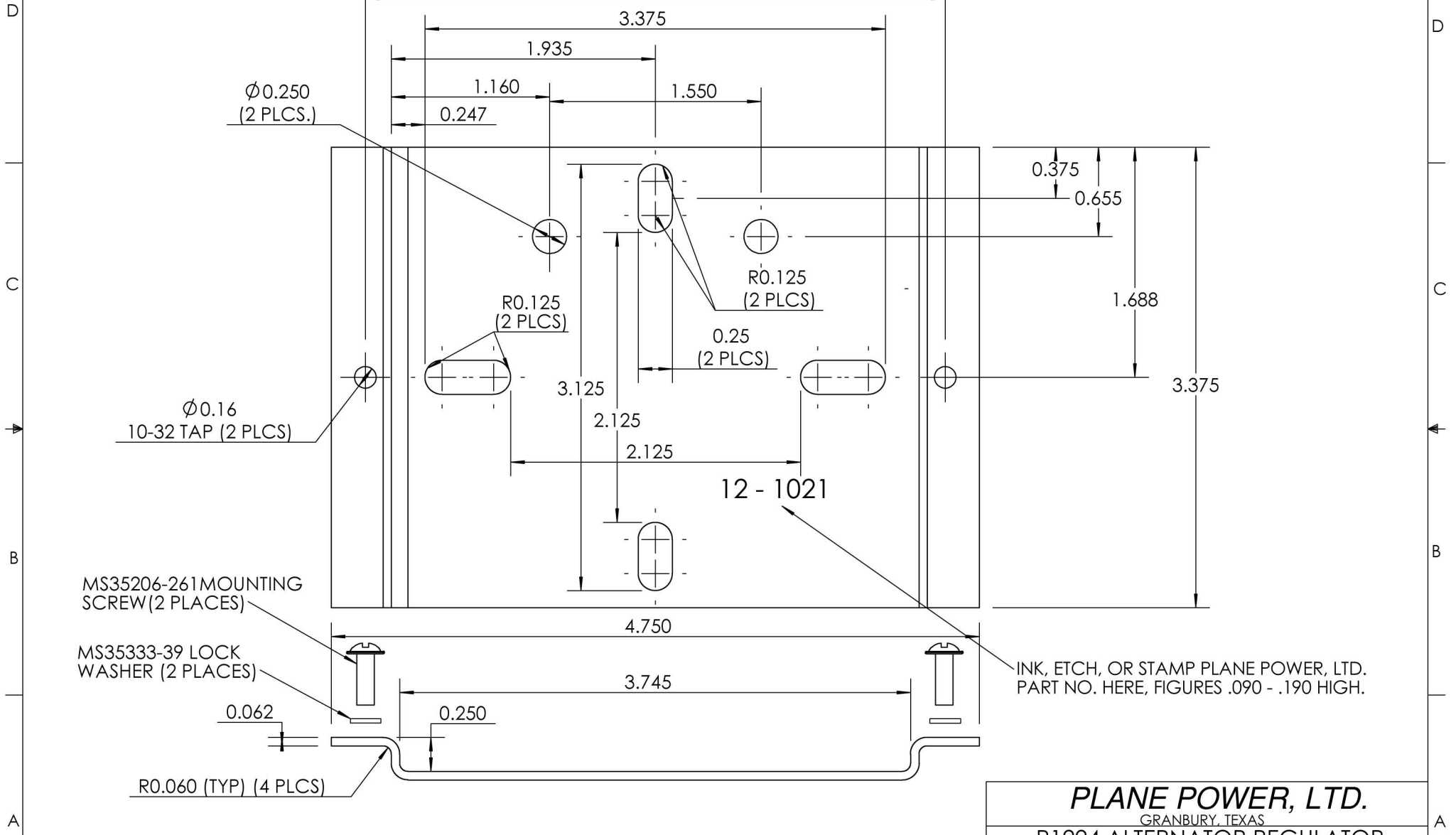


NOTE : 1. MATERIAL ASTM A366/A1008 COLD ROLLED STEEL
 ZINC PLATE PER ASTM B 633 TYPE 11 SC 3,
 THICKNESS TO BE 0.0003 - 0.0010
 2. BREAK ALL EDGES

PIPER/INTER-AV VOLTAGE REGULATOR INSTALLATION AID P/N 12-1021



INK, ETCH, OR STAMP PLANE POWER, LTD.
 PART NO. HERE, FIGURES .090 - .190 HIGH.

STANDARD TOLERANCES

ALL DIMENSIONS IN INCHES UNLESS SPECIFIED
 DECIMALS ± 0.02 ANGLES ± 1 DEGREE
 FRACTIONS ± 1/16 CONCENTRICITY 0.005 TIR

PLANE POWER, LTD.		
GRANBURY, TEXAS		
R1224 ALTERNATOR REGULATOR INSTALLATION INSTRUCTIONS		
DRAWN BY:	B. JOWERS	DATE: 8/08/06
MATERIALS: SEE NOTE	DWG. NO. 12 - 1001 PG. 4 of 4	REV. E