

MODEL P40GPS DEICING CART

Assembly & Operation Instructions



Technical Specifications

- Deicing cart mobility provided by ATV, tractor, etc.
- Heavy duty channel steel frame
- 2.5 HP, 4-cycle, recoil start engine
- Hypro #4101C - 4 roller pump
- Pressure release valve
- Adjustable pump settings - 0 to 150 PSI & 7.0 GPM
- Pressure gauge (0 - 200 PSI)
- 40 gallon polyethylene tank
- 25' of 3/8" ID high pressure hose
- GunJet aluminum handgun w/ 24" extension
- Large 13 x 500 - 6 pneumatic tubeless tires
- One year warranty

Assembly of Cart

The Model P40GPS cart is factory assembled, except for the tow hitch and wheels. Refer to the enclosed parts list.

- Secure the tow hitch to the frame w/ 3/8" hex bolts & nuts.
- Secure the axle to the frame w/ four 5/16" hex bolts, washers, nuts & clips. Slide a wheel spacer over the end of each axle end, then slide the wheel (valve stem out) onto the axle end. Secure w/ cotter pins. Slide the red plastic hub covers over hub.
- Install Castering Nosewheel. (optional)
- If an Immersion Heater is supplied, screw it tightly into the polyethylene tank fitting in the lower rear of the tank.

Important! Before use, you must add the proper grade and amount of oil to the engine crankcase and gasoline to the gas tank.

Component Manuals

Manuals covering the engine and Hypro roller pump are enclosed with these instructions. Please refer to these -- especially the engine manual -- prior to operating your cart.

Parts Lists

Parts for the Model P40GPS are available from Aircraft Deicing Systems. Diagrams showing the respective subassemblies are enclosed.

Warranty

The Model P40GPS is warranted against defects in materials

and workmanship for one year from shipment. Please contact the engine manufacturer, the pump manufacturer, or us for warranty remedy.

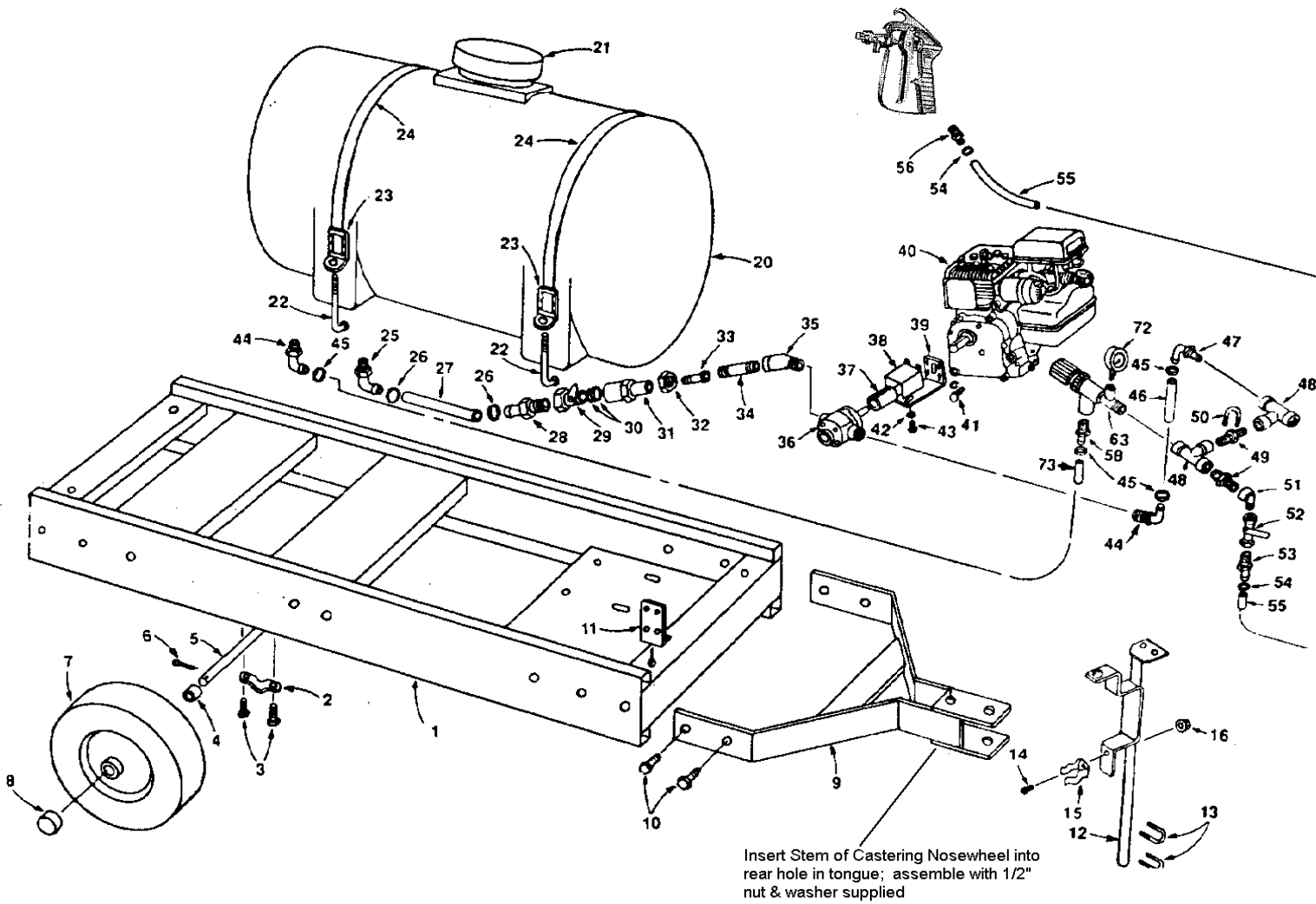
Operation of the Cart

Test the operation of the cart by filling & operating the unit with clean water. Follow the procedure below, increasing the pressure to 150 psi to thoroughly test the system, checking for proper operation and leaks. After testing, remove all water & fill the tank with deicing or anti-icing fluid. If deicing, use the attached adjustable nozzle, and adjust to suit; if anti-icing, remove the adjustable nozzle and install the enclosed fan-spray nozzle & cap.

To operate the Model P40GPS, simply:

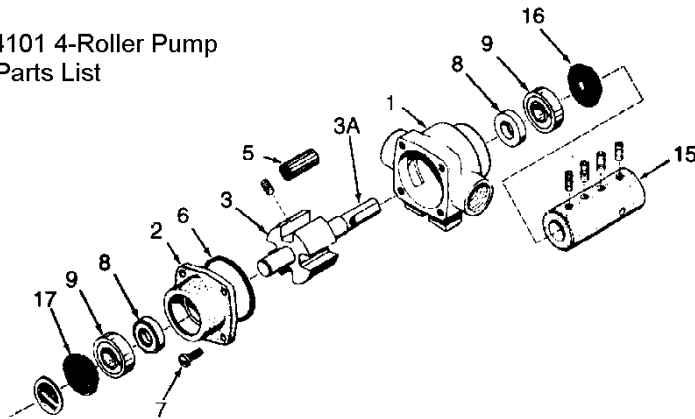
- Place deicing or anti-icing fluid in the tank.
- Make sure the nylon valve in the fluid supply line (between the tank and pump) is open, and fluid has reached the pump.
- Turn the knob on the pressure valve outward to minimize the initial pressure upon startup.
- Start the engine per the manufacturer's instructions. Make sure the correct quantity of gas and oil are present before starting the engine.
- Adjust pressure as desired by turning the pressure valve knob (out to decrease pressure; in to increase) squeeze the handgun lever to begin operations.

Aircraft Deicing Systems, Inc.
Model P35GPS
Parts List



Aircraft Deicing Systems, Inc.

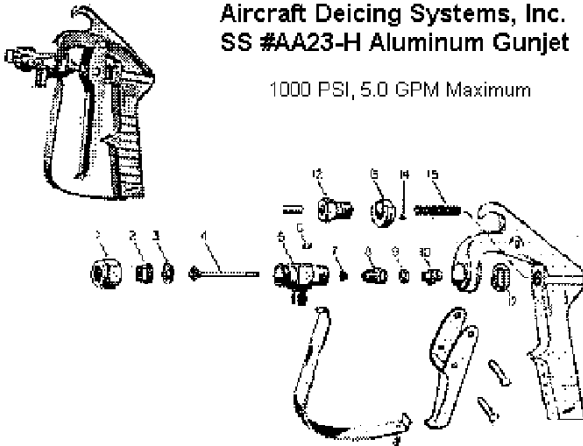
Hypro #4101 4-Roller Pump
Parts List



Ref.	Code No.	Quan.	Description
1	5002351	1	Body w/Seal
2	5017233	1	End Plate
3	5172127	1	Rotor & Shaft Assy.
3A	5118078	1	Shaft Only
*5	Available In Kit Only Marked *		
*6	Available In Kit Only Marked *		
7	5117238	4	Endplate Screw
*8	Available In Kit Only Marked *		
9	5031025	2	Ball Bearing (Sealed)
15	5005175	1	Adapter Kit with four set screws
16	5017480	1	Shaft Bearing Cover
17	5017481	1	Rear Bearing Cover
	5168750	1	Repair Kit Marked *

Aircraft Deicing Systems, Inc.
SS #AA23-H Aluminum Gunjet

1000 PSI, 5.0 GPM Maximum



Ref.	Code No.	Mfg's Part No.	Description
1	5046082	CP7890-NP	Cap Brass
2			Spray Tip (Order By No.)
3	5115025	CP7490 BRTF	Valve Seat, Teflon
4	Available In Kit Only		Main Stem Assembly
5	5002356	CP16052-NP	Inlet Body
6	5089030	CP7892-IZP	Key
7	Available In Kit Only		Packing Cup
8	5117137	CP16071-NP	Packing Screw
9	5006084	CP7484-SS	Stem Nut
10	5077009	CP7481-INP	Trigger Guide
12	5117138	CP9421-INP	Safety Lock
13	5045010	CP9422-AL	Safety Lock Cam
14	5117139	CP9423-1	Set Screw
15	Available In Kit Only		Main Spring
17	5006083	CP7486-IZP	Lock Nut

Pressure Relief Valve
Parts List



Item	Code No.	Mfg's Part No.	Description
1	5272112	35571-1	Screw Pin Assembly
2	5006084	1345-1	Locknut
3	5046044	13589	Cap
*4	Available In Kit Only		O Ring
*5	Available In Kit Only		Spring Guide
*6	Available In Kit Only		O Ring
*7	Available In Kit Only		Spring Retainer
*8	Available In Kit Only		Spring
*9	Available In Kit Only		Valve Seat
10	5002237	13896	Body
	5168438		Repair Kit Marked*