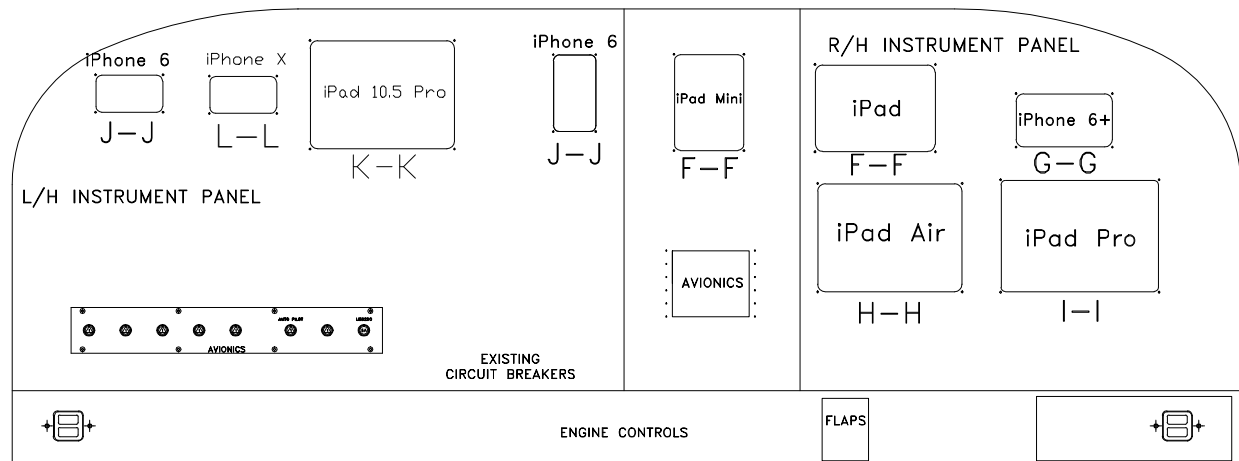


REVISIONS			
REV	DESCRIPTION	DATE	APVD
A	Initial release	06/2/2016	
B	add iPhone X 10.5	12/16/2017	

NOTES:

- EXISTING EQUIPMENT.
- PERMISSIBLE TO TRIM PARTS CREATED BY THIS DRAWING ON INSTALLATION AS REQUIRED.
- TOUCH UP ALL BARE ALUMINUM SURFACES WITH ALODINE PER MIL-C-5541 CLASS 3.
- PARENTHETICAL ENTITIES, (), ARE FOR REFERENCE ONLY.
- LOCATE CIRCUIT BREAKER IN THE SAME GENERAL AREA WITH EXISTING CIRCUIT BREAKERS. LABEL AS SHOWN USING STANDARD ENGRAVING, SILKSCREEN, OR OTHER TECHNIQUES. LETTERING TO BE SAME HEIGHT AS EXISTING C/B LETTERING.
- DENOTES EXISTING WIRES.
- ALL GROUNDS GO TO NEAREST GROUND POINT ON AIRCRAFT.
- TIE INTO EXISTING BUS BAR NEAR LOCATION OF NEW CIRCUIT BREAKER. IF A JUMPER WIRE IS REQUIRED, USE 20 GAUGE MIL-W-22759/XX TYPE.
- BEST COMMERCIAL EQUIVALENT MAY BE SUBSTITUTED FOR THIS PART.
- THE INSTALLATION OF WIRING TO BE PERFORMED IN ACCORDANCE WITH AC 43.13-1B, 2A, ACCEPTABLE METHODS, TECHNIQUES, AND PRACTICES - AIRCRAFT ALTERATIONS, CHAPTER 11. ALL WIRE TO BE MIL-W-22759/16 OR EQUIVALENT.



INSTRUMENT PANEL

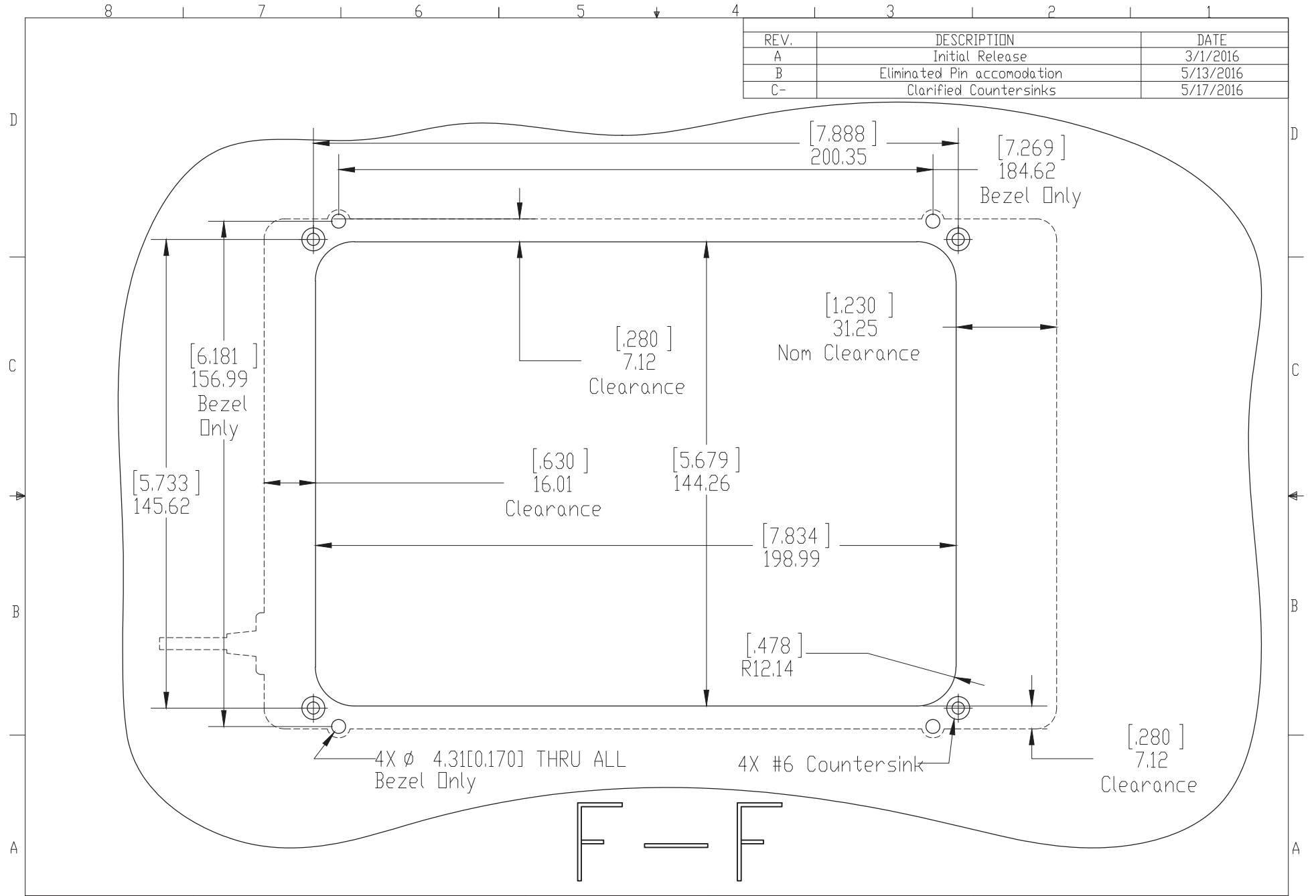
VIEW LOOKING FWD

FILENAME: 01-2510-01D01

ITEM		QTY	PART NUMBER		DESCRIPTION	VENDOR
1	1		USB-200-101		USB Port	GUARDIAN AVIONICS
PROPRIETARY NOTICE		RIVET CODES PER NAS823		UNLESS OTHERWISE NOTED ALL DIM ARE IN INCHES		
This drawing contains specifications and/or data, technical material, proprietary designs and information that are the sole property of G O Guardian, LLC, and treated by its recipient as a confidential trade, and is not to be shown or disclosed to any unauthorized organization or person.		BB = MS20426AD BJ = MS20470AD		TOLERANCES: XXX ±.010 ANGLES .XX ±.03 ±1/2° .X ±.1		
UNLESS OTHERWISE NOTED: ALL SHD RAD TO BE 3 X MATL THICKNESS		DASH		TITLE		
DASH		NEXT ASSY		Docks INSTALLATION		
REL		ASH VIJ		DRAWING NO.		
REL		06/2/2016		Docks121617846A		
REL		06/2/2016		SH 1 REV 15 B		



REV.	DESCRIPTION	DATE
A	Initial Release	3/1/2016
B	Eliminated Pin accomodation	5/13/2016
C-	Clarified Countersinks	5/17/2016



©COPYRIGHT GUARDIAN AVIONICS
 THE INFORMATION IN THIS DRAWING IS CONFIDENTIAL
 AND IS THE INTELLECTUAL PROPERTY OF GUARDIAN
 AVIONICS. REPRODUCTION IN WHOLE OR IN PART
 WITHOUT WRITTEN PERMISSION OF GUARDIAN
 AVIONICS IS PROHIBITED.

DO NOT SCALE DRAWING TOLERANCES UNLESS OTHERWISE SPECIFIED		
METRIC	IMPERIAL	ANGLES
X ± .10mm	.X ± .05°	±1°
.X ± .3mm	.XX ± .01°	
.XX ± .1mm	.XXX ± .005°	

PROJECT:
iPad Mini 3-Dock

SCALE: 1:1.5

DWG # Use Name

DRAWING NAME:
(Mini) Panel Reference

REVISION
C-

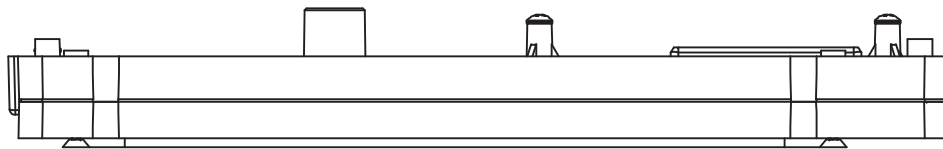
PRINT DATE
5/17/2016

SHEET:
2 of 15

8 7 6 5 4 3 2 1

D

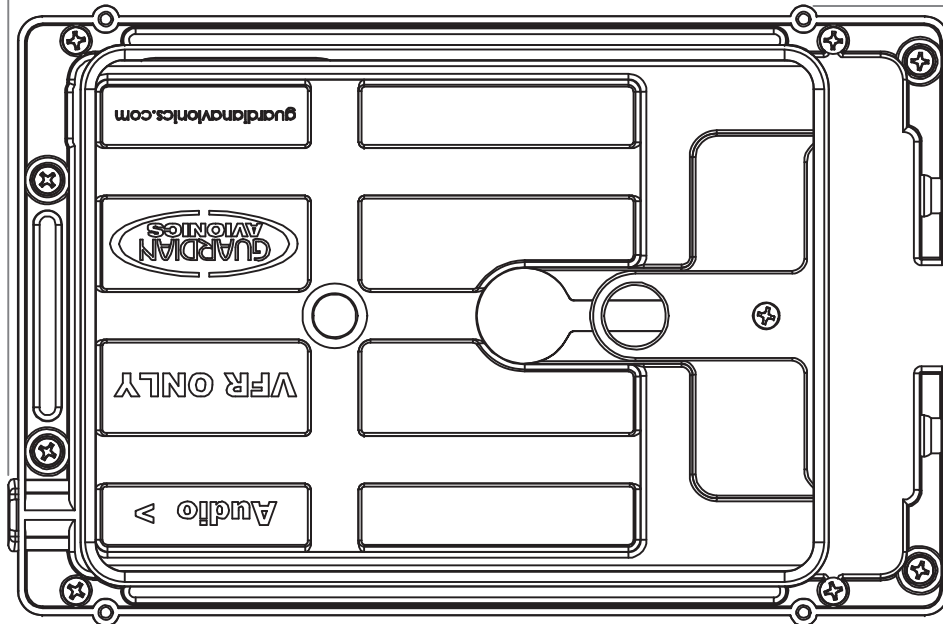
D



[248.74]
9.79

C

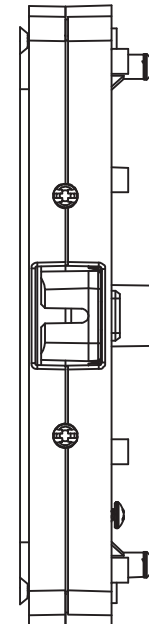
C



[164.08]
6.46

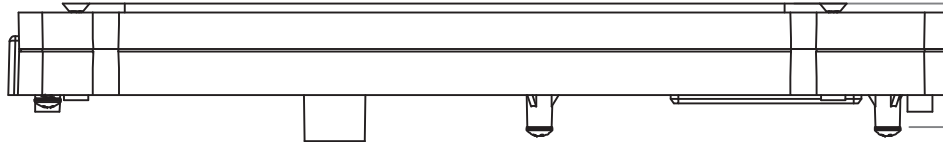
B

B



A

A



[32.59]
1.28



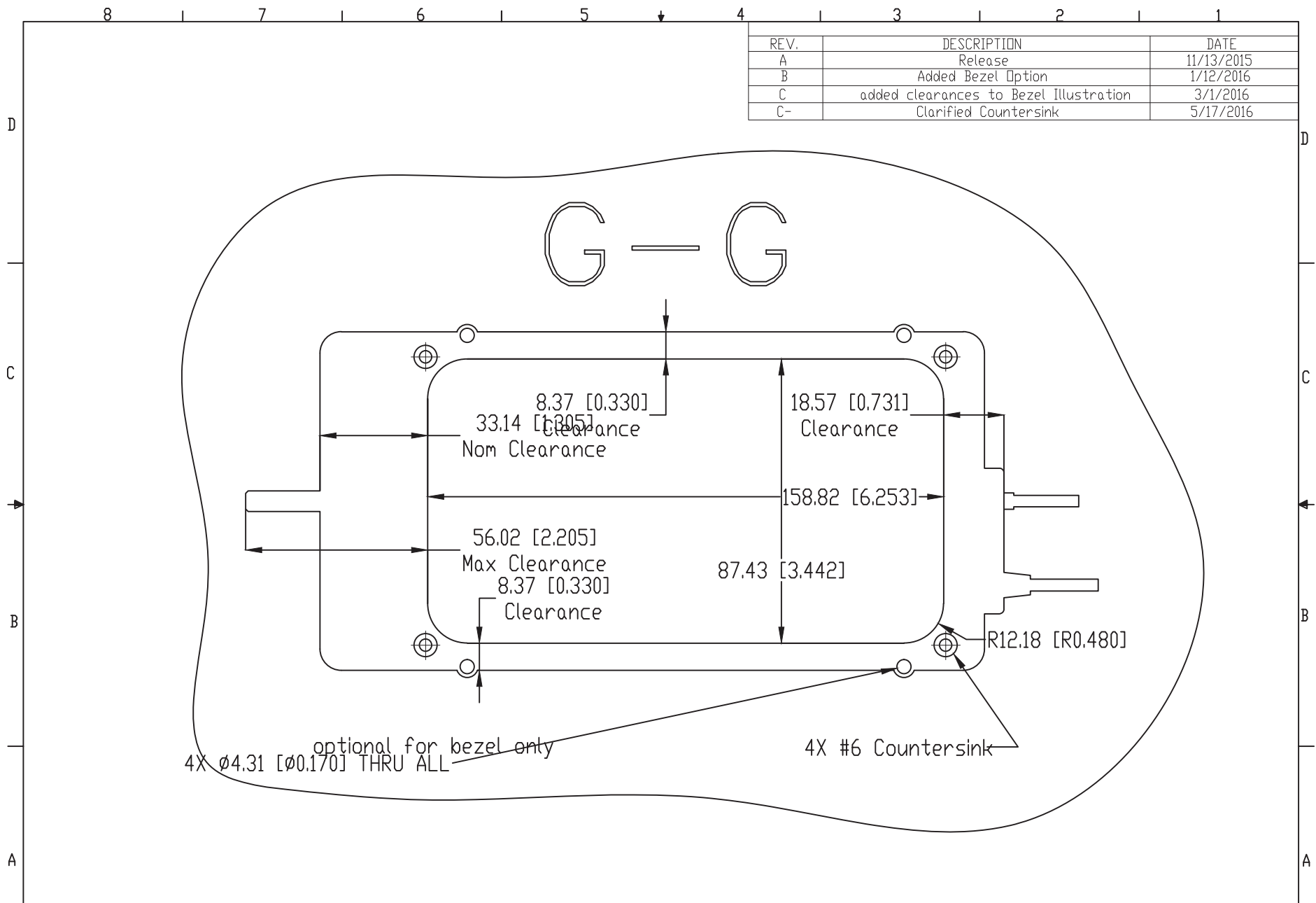
© COPYRIGHT GUARDIAN AVIONICS
THE INFORMATION IN THIS DRAWING IS CONFIDENTIAL
AND IS THE INTELLECTUAL PROPERTY OF GUARDIAN
AVIONICS. REPRODUCTION IN WHOLE OR IN PART
WITHOUT WRITTEN PERMISSION OF GUARDIAN
AVIONICS IS PROHIBITED.

DO NOT SCALE DRAWING
TOLERANCES UNLESS
OTHERWISE SPECIFIED:
METRIC IMPERIAL ANGLES
X ± 1.00mm .X ± .05"
X ± 3mm .XX ± .01"
.XX ± .1mm .XXX ± .005" ± 1°

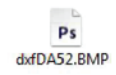
PROJECT:
iPad Mini 3-Dock
SCALE: 1:2
DWG #
IPM-100

DRAWING NAME
(Mini) DOCK ASSY
REVISION
J
PRINT DATE
9/16/2016
SHEET
3 of 15

8 7 6 5 4 3 2 1



REV.	DESCRIPTION	DATE
A	Release	11/13/2015
B	Added Bezel Option	1/12/2016
C	added clearances to Bezel Illustration	3/1/2016
C-	Clarified Countersink	5/17/2016



©COPYRIGHT GUARDIAN AVIONICS
 THE INFORMATION IN THIS DRAWING IS CONFIDENTIAL
 AND IS THE INTELLECTUAL PROPERTY OF GUARDIAN
 AVIONICS. REPRODUCTION IN WHOLE OR IN PART
 WITHOUT WRITTEN PERMISSION OF GUARDIAN
 AVIONICS IS PROHIBITED.

DO NOT SCALE DRAWING		
TOLERANCES UNLESS OTHERWISE SPECIFIED:		
METRIC	IMPERIAL	ANGLES
X ± 1.00mm	.X ± .05"	± 1°
.X ± .3mm	.XX ± .01"	
.XX ± .1mm	.XXX ± .005"	

PROJECT: iPhone6Plus Dock	DWG # [Use Name]
SCALE: 1:1.5	

DRAWING NAME: (iPhone6Plus) Panel Cut Reference	REVISION C-	PRINT DATE 5/17/2016	SHEET: 4 OF 15
--	----------------	-------------------------	-------------------

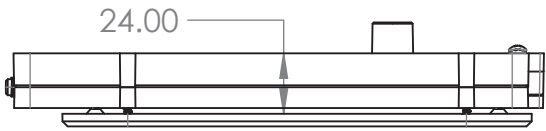
8 7 6 5 4 3 2 1

D

D

C

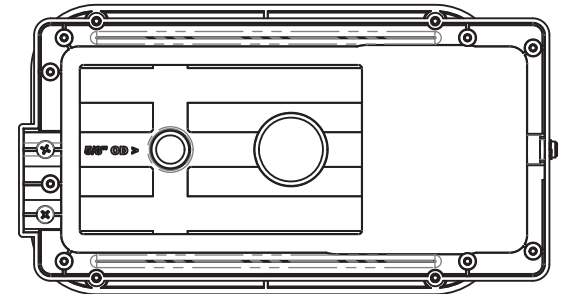
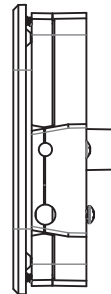
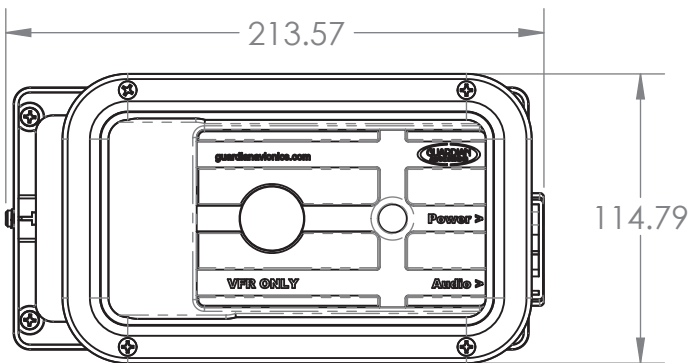
C



4 Assembly Screws (those NOT installed in C-Sunk holes) should be bagged in Poly Bag for installer

B

B



A

A



© COPYRIGHT GUARDIAN AVIONICS
 THE INFORMATION IN THIS DRAWING IS CONFIDENTIAL
 AND IS THE INTELLECTUAL PROPERTY OF GUARDIAN
 AVIONICS. REPRODUCTION IN WHOLE OR IN PART
 WITHOUT WRITTEN PERMISSION OF GUARDIAN
 AVIONICS IS PROHIBITED.

DO NOT SCALE DRAWING
 TOLERANCES UNLESS
 OTHERWISE SPECIFIED:
 METRIC IMPERIAL ANGLES
 X ±1.00mm .X ±.05"
 .X ±.3mm .XX ±.01"
 .XX ±.1mm .XXX ±.005" ±1°

PROJECT:
 iPhone6Plus Dock

SCALE: 1:3
 DWG # IP6+100

DRAWING NAME:
 (iPhone6Plus) DASH CHASSIS

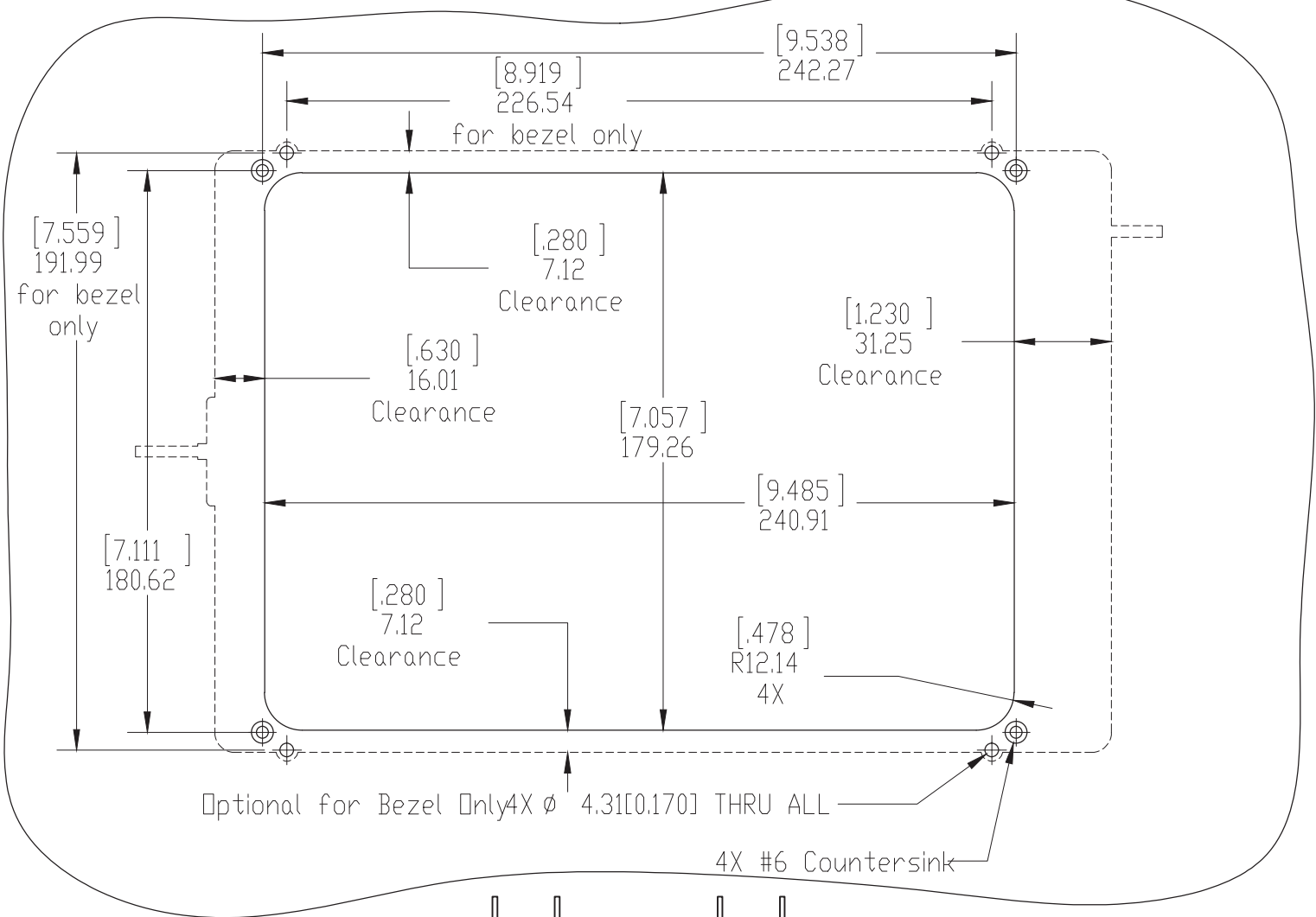
REVISION
 B--

PRINT DATE
 9/16/2016

SHEET:
 5 of 15

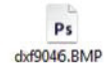
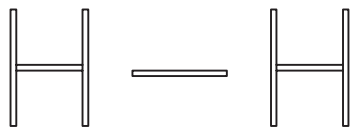
8 7 6 5 4 3 2 1

REV.	DESCRIPTION	DATE
A	Initial Release	3/1/2016
B	Clarified countersink	5/17/2016



Optional for Bezel Only 4X Ø 4.31 [0.170] THRU ALL

4X #6 Countersink



©COPYRIGHT GUARDIAN AVIONICS
 THE INFORMATION IN THIS DRAWING IS CONFIDENTIAL
 AND IS THE INTELLECTUAL PROPERTY OF GUARDIAN
 AVIONICS. REPRODUCTION IN WHOLE OR IN PART
 WITHOUT WRITTEN PERMISSION OF GUARDIAN
 AVIONICS IS PROHIBITED.

DO NOT SCALE DRAWING
 TOLERANCES UNLESS
 OTHERWISE SPECIFIED:

METRIC	IMPERIAL	ANGLES
X ± 1.00mm	X ± .05"	± 1°
X ± .3mm	.XX ± .01"	
.XX ± .1mm	.XXX ± .005"	

PROJECT: iPad Air2 Dock

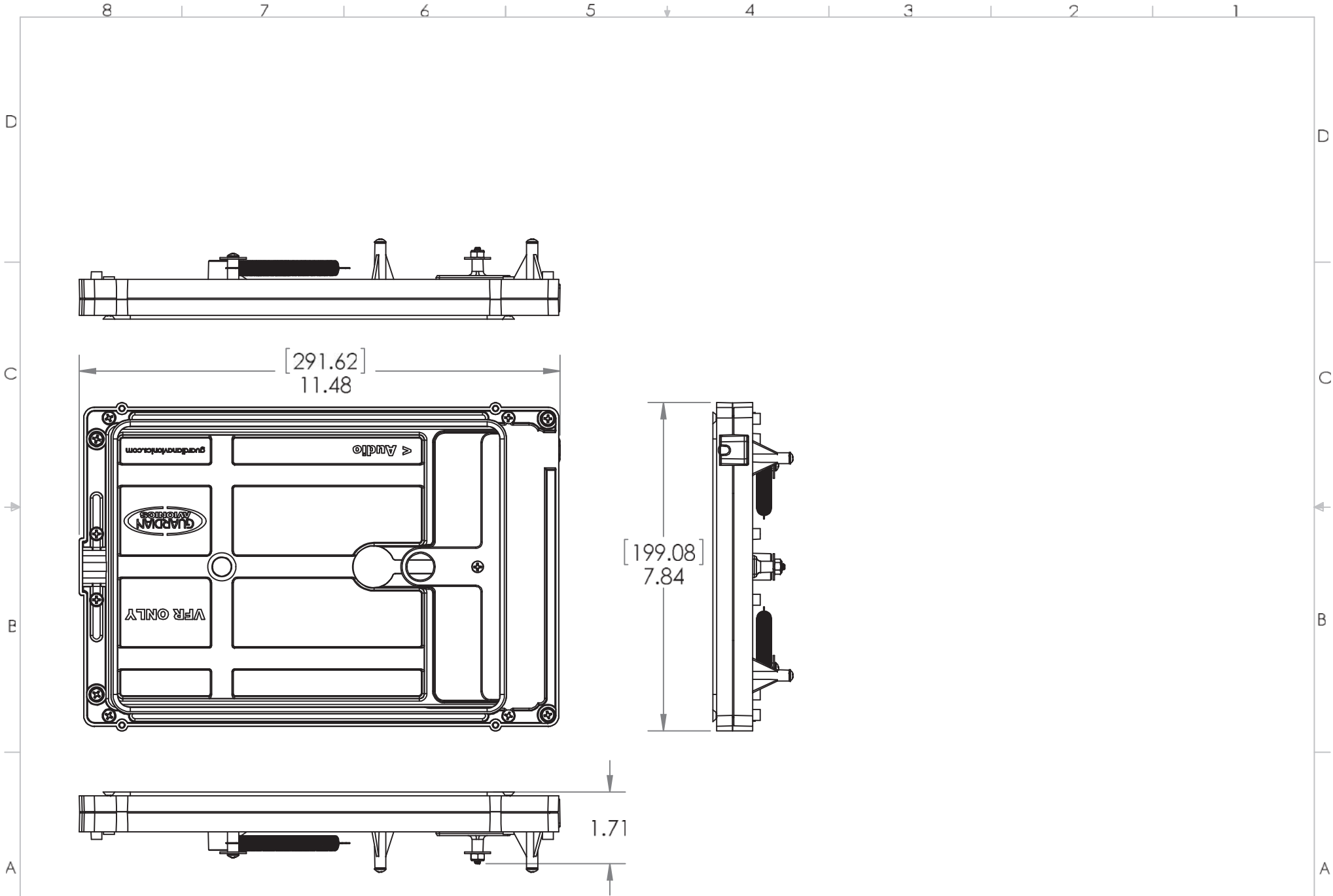
SCALE: 1:2
 DWG # Use Name

DRAWING NAME:
 (Air2) Panel Reference

REVISION
 B

PRINT DATE
 5/17/2016

SHEET:
 6 of 15



© COPYRIGHT GUARDIAN AVIONICS
 THE INFORMATION IN THIS DRAWING IS CONFIDENTIAL
 AND IS THE INTELLECTUAL PROPERTY OF GUARDIAN
 AVIONICS. REPRODUCTION IN WHOLE OR IN PART
 WITHOUT WRITTEN PERMISSION OF GUARDIAN
 AVIONICS IS PROHIBITED.

DO NOT SCALE DRAWING
 TOLERANCES UNLESS
 OTHERWISE SPECIFIED:
 METRIC IMPERIAL ANGLES
 X ± 1.00mm .X ± .05"
 X ± .3mm .XX ± .01"
 .XX ± .1mm .XXX ± .005" ± 1°

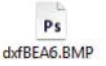
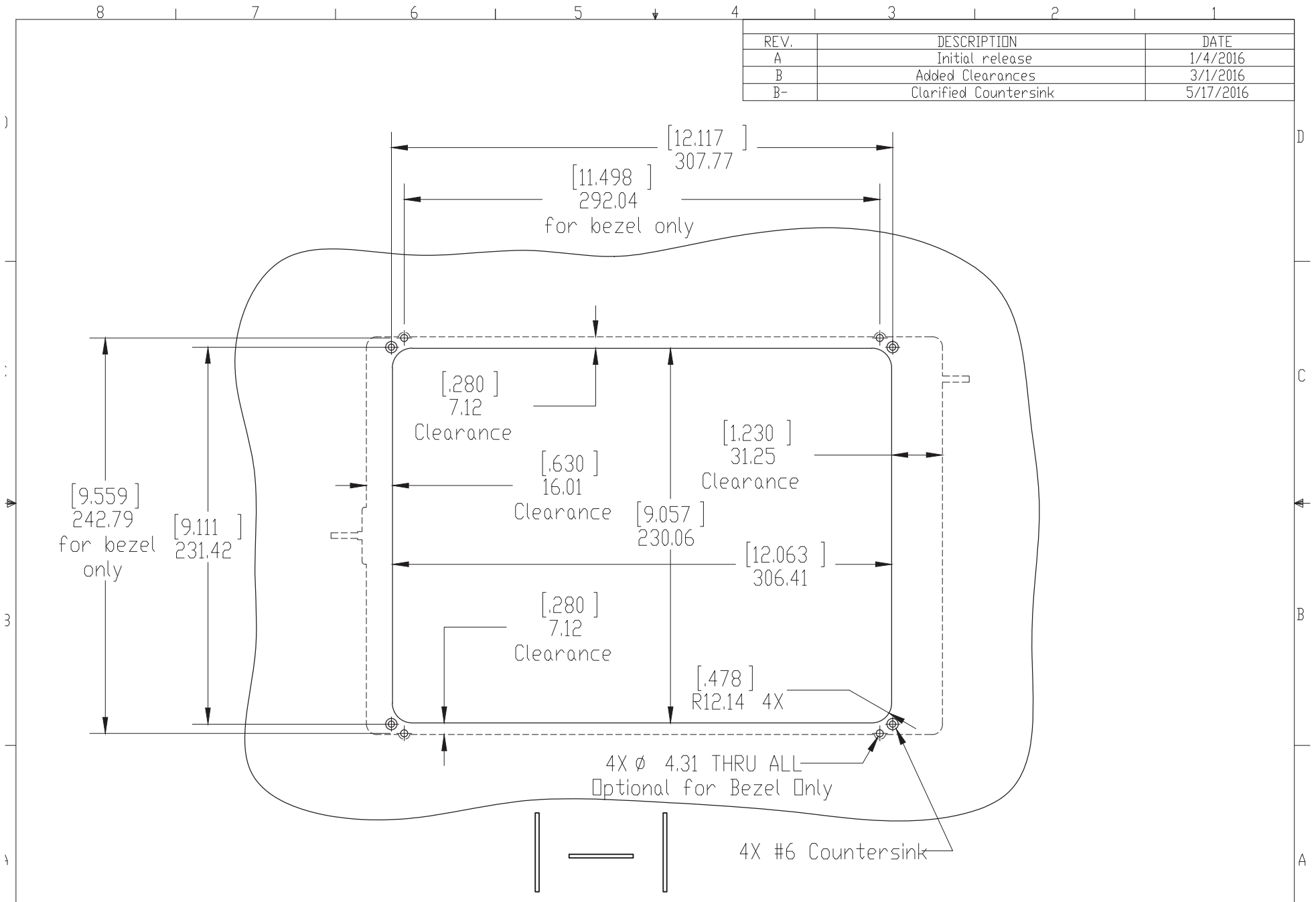
PROJECT:
iPad Air-2 Dock

SCALE: **1:3** DWG # **IPA2-100**

DRAWING NAME
(Air2) DOCK ASSY

REVISION E-	PRINT DATE 9/16/2016	SHEET 7 of 15
-----------------------	--------------------------------	-------------------------

REV.	DESCRIPTION	DATE
A	Initial release	1/4/2016
B	Added Clearances	3/1/2016
B-	Clarified Countersink	5/17/2016



©COPYRIGHT GUARDIAN AVIONICS
 THE INFORMATION IN THIS DRAWING IS CONFIDENTIAL
 AND IS THE INTELLECTUAL PROPERTY OF GUARDIAN
 AVIONICS. REPRODUCTION IN WHOLE OR IN PART
 WITHOUT WRITTEN PERMISSION OF GUARDIAN
 AVIONICS IS PROHIBITED.

DO NOT SCALE DRAWING		
TOLERANCES UNLESS OTHERWISE SPECIFIED:		
METRIC	IMPERIAL	ANGLES
X ± 1.00mm	.X ± .05°	±1°
.X ± .3mm	.XX ± .01°	
.XX ± .1mm	.XXX ± .005°	

PROJECT:
iPad Pro Dock

SCALE: 1:3

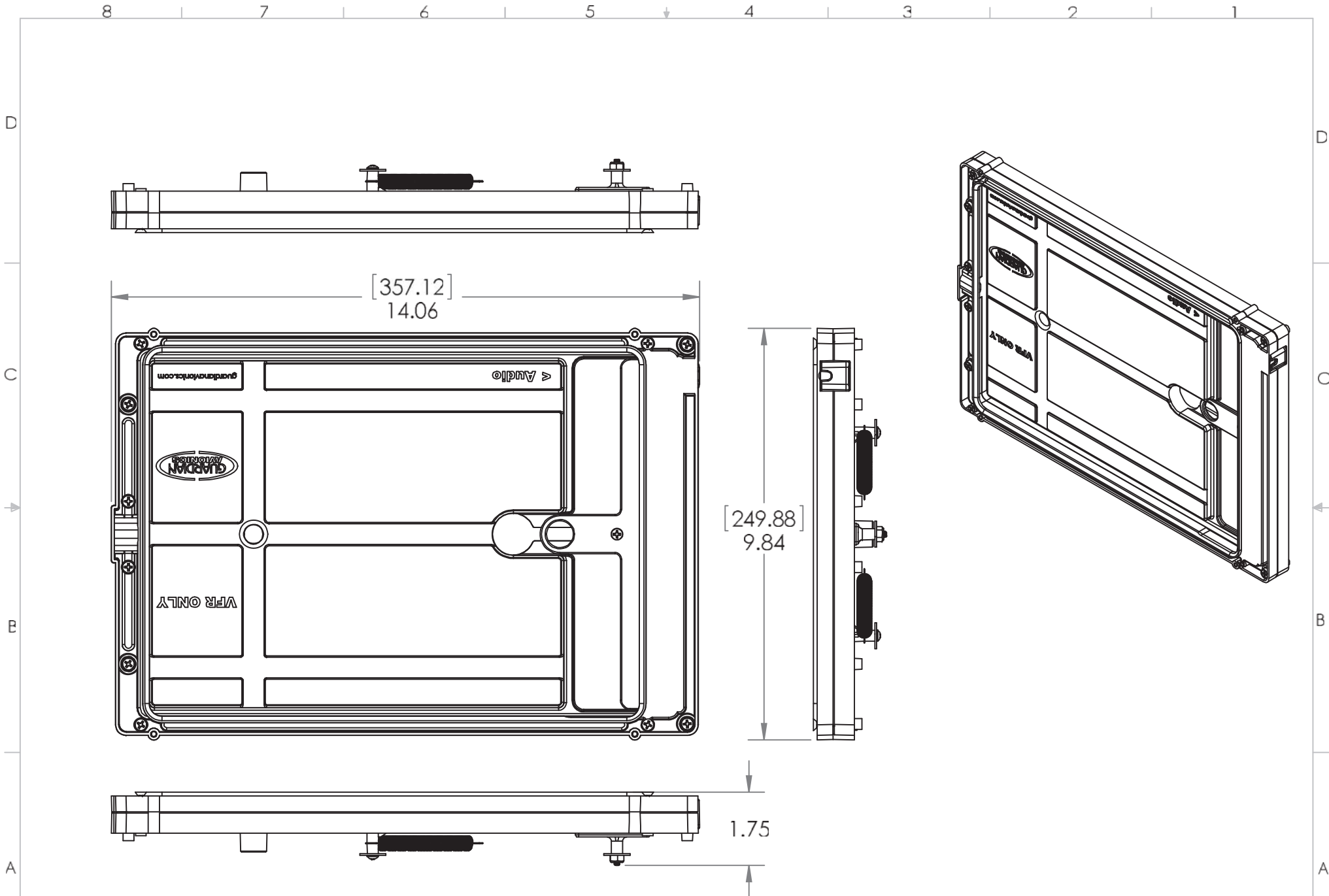
DWG #
Use Name

DRAWING NAME:
(iPadPro) Panel Reference

REVISION
B-

PRINT DATE
5/17/2016

SHEET:
8 of 15



© COPYRIGHT GUARDIAN AVIONICS
 THE INFORMATION IN THIS DRAWING IS CONFIDENTIAL
 AND IS THE INTELLECTUAL PROPERTY OF GUARDIAN
 AVIONICS. REPRODUCTION IN WHOLE OR IN PART
 WITHOUT WRITTEN PERMISSION OF GUARDIAN
 AVIONICS IS PROHIBITED.

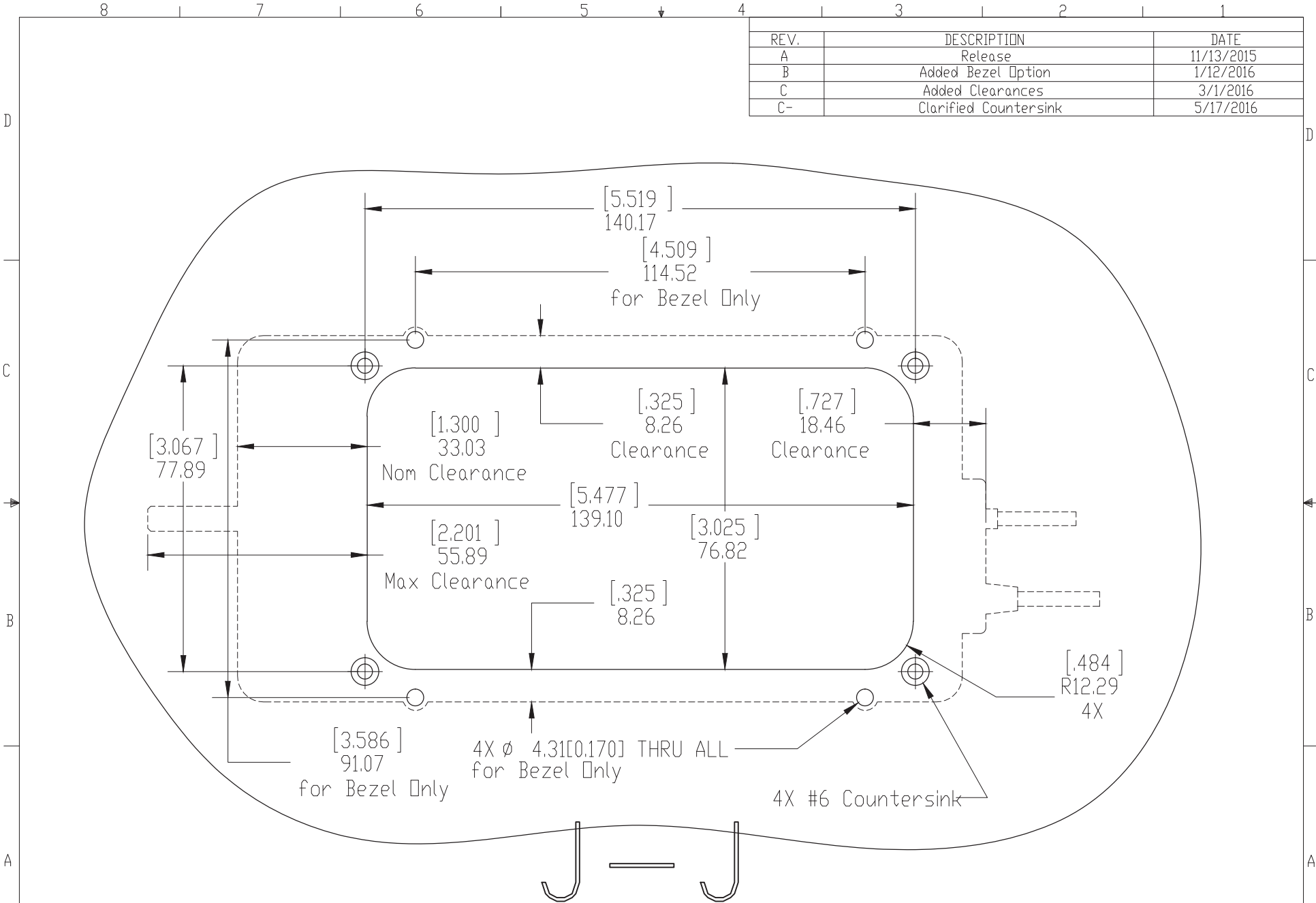
DO NOT SCALE DRAWING
 TOLERANCES UNLESS
 OTHERWISE SPECIFIED:
 METRIC IMPERIAL ANGLES
 X±1.00mm .X ±.05" ±1°
 .X±.3mm .XX ±.01"
 .XX±.1mm .XXX±.005"

PROJECT:
iPad Pro Dock
 SCALE: **1:3**
 DWG # **IPP-100**

DRAWING NAME
(iPadPro) DOCK ASSY
 REVISION **C**

PRINT DATE **9/16/2016**
 SHEET **9 of 15**

REV.	DESCRIPTION	DATE
A	Release	11/13/2015
B	Added Bezel Option	1/12/2016
C	Added Clearances	3/1/2016
C-	Clarified Countersink	5/17/2016



©COPYRIGHT GUARDIAN AVIONICS
 THE INFORMATION IN THIS DRAWING IS CONFIDENTIAL
 AND IS THE INTELLECTUAL PROPERTY OF GUARDIAN
 AVIONICS. REPRODUCTION IN WHOLE OR IN PART
 WITHOUT WRITTEN PERMISSION OF GUARDIAN
 AVIONICS IS PROHIBITED.

DO NOT SCALE DRAWING TOLERANCES UNLESS OTHERWISE SPECIFIED:		
METRIC	IMPERIAL	ANGLES
X ± 1.00mm	.X ± .05°	±1°
.X ± .3mm	.XX ± .01°	
.XX ± .1mm	.XXX ± .005°	

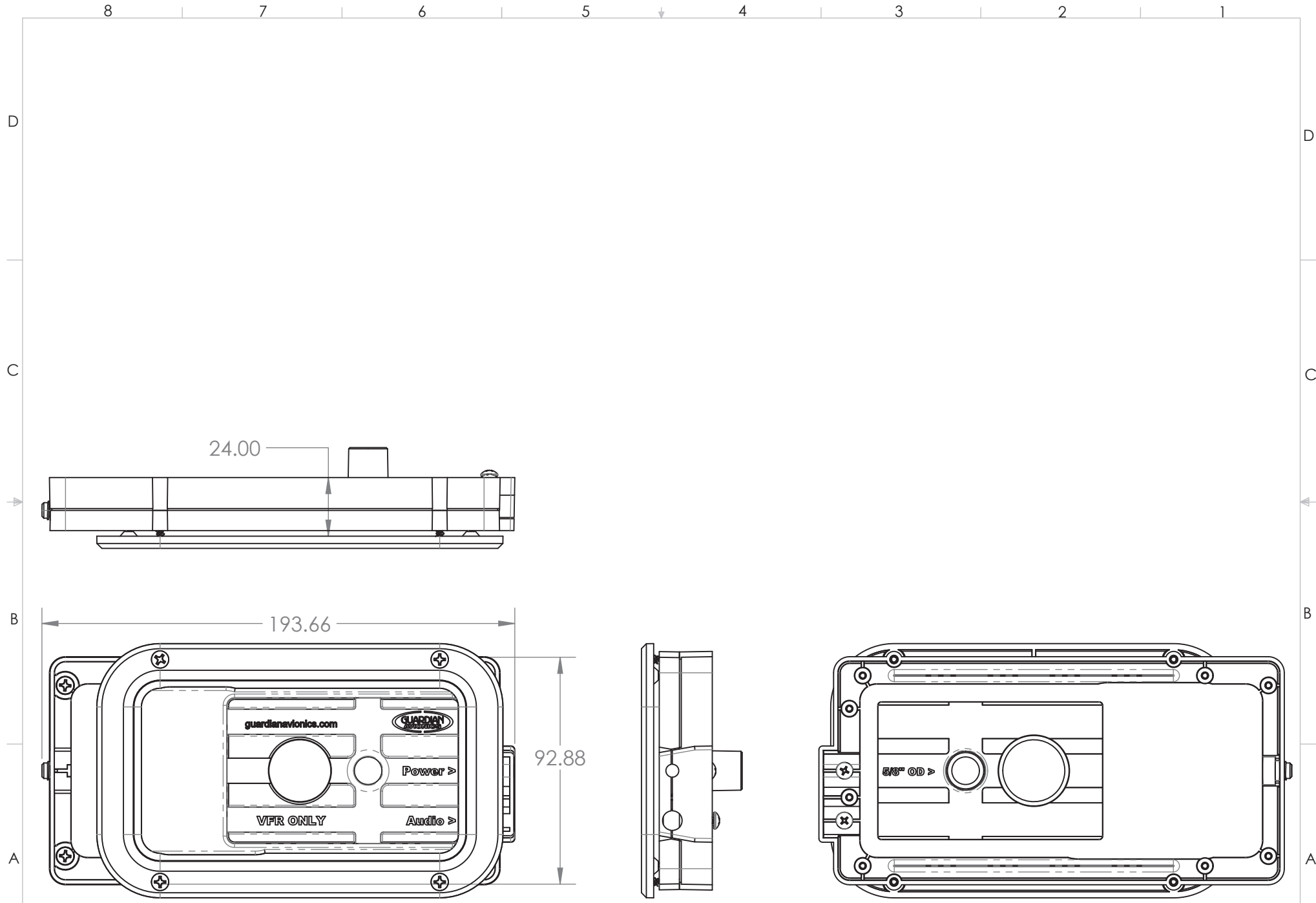
PROJECT: Dock-iPhone6

SCALE: 1:1.25
 DWG #: [Use Name]

DRAWING NAME: (iPhone6) Panel Cut Reference

REVISION: C-
 PRINT DATE: 5/17/2016

SHEET: 10 OF 15



© COPYRIGHT GUARDIAN AVIONICS
 THE INFORMATION IN THIS DRAWING IS CONFIDENTIAL
 AND IS THE INTELLECTUAL PROPERTY OF GUARDIAN
 AVIONICS. REPRODUCTION IN WHOLE OR IN PART
 WITHOUT WRITTEN PERMISSION OF GUARDIAN
 AVIONICS IS PROHIBITED.

DO NOT SCALE DRAWING
 TOLERANCES UNLESS
 OTHERWISE SPECIFIED:
 METRIC IMPERIAL ANGLES
 X ±1.00mm X ±.05"
 .X ±.3mm .XX ±.01"
 .XX ±.1mm .XXX ±.005" ±1°

PROJECT:
 Dock-iPhone6

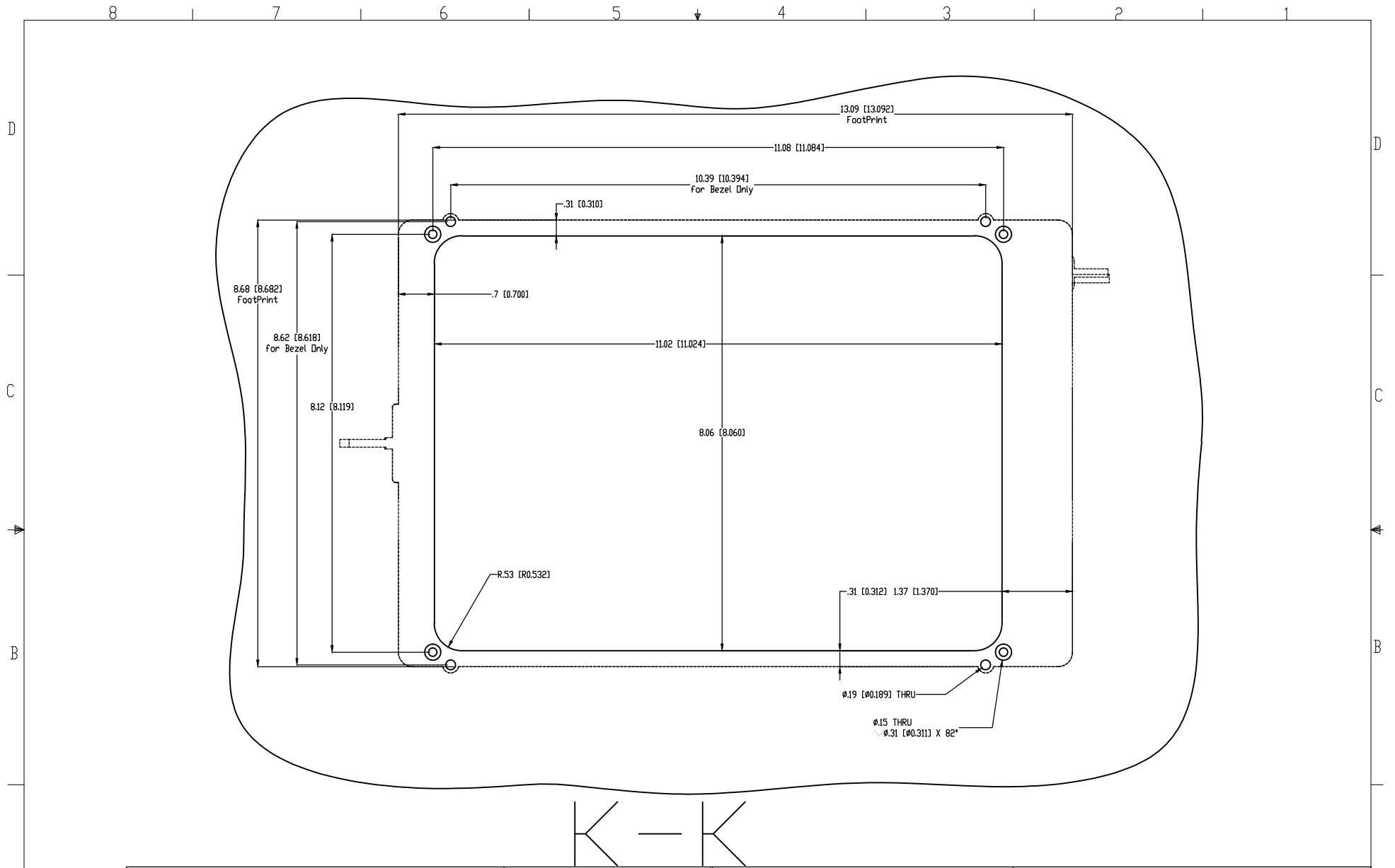
SCALE: 1:2
 DWG # IP6-100

DRAWING NAME:
 (iPhone6) IPHONE 6 DASH CHASSIS

REVISION
 C--

PRINT DATE
 9/16/2016

SHEET:
 11 OF 15



K — K

©COPYRIGHT GUARDIAN AVIONICS
 THE INFORMATION IN THIS DRAWING IS CONFIDENTIAL
 AND IS THE INTELLECTUAL PROPERTY OF GUARDIAN
 AVIONICS. REPRODUCTION IN WHOLE OR IN PART
 WITHOUT WRITTEN PERMISSION OF GUARDIAN
 AVIONICS IS PROHIBITED.

DO NOT SCALE DRAWING		
TOLERANCES UNLESS OTHERWISE SPECIFIED:		
METRIC	IMPERIAL	ANGLES
X ± 1.00mm	.X ± .05"	
.X ± .3mm	.XX ± .01"	± 1°
.XX ± .1mm	.XXX ± .005"	

PROJECT: iPadPro 10.5 Dock	
SCALE: 1:1	DWG # Use Name

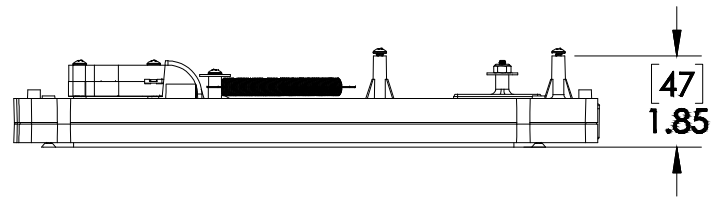
DRAWING NAME: (iPadPro 10.5) Panel Reference		
REVISION B	PRINT DATE 12/7/2017	SHEET: 12 of 13

A

A

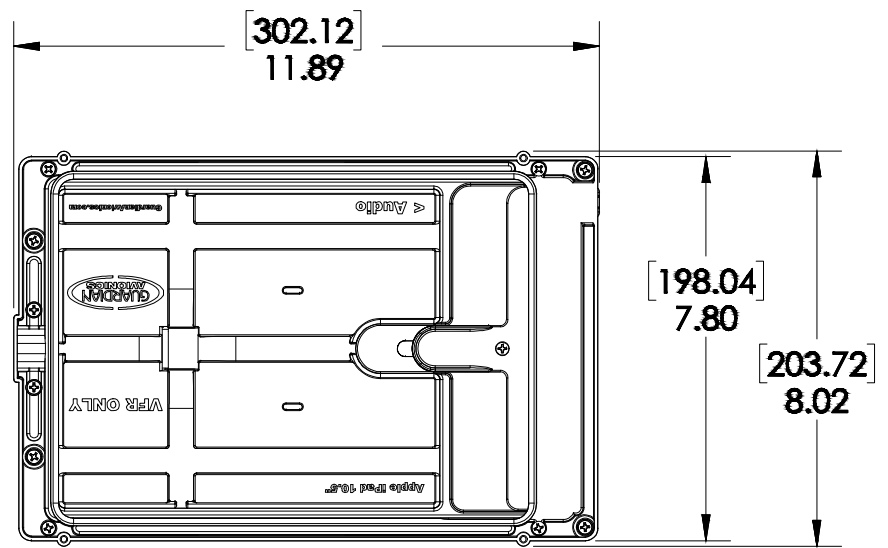
8 7 6 5 4 3 2 1

D



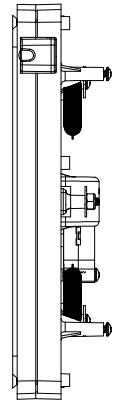
D

C



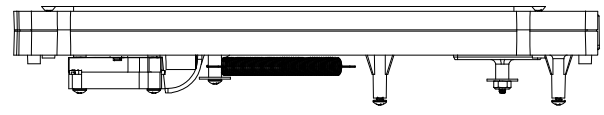
C

B



B

A



A



© COPYRIGHT GUARDIAN AVIONICS
 THE INFORMATION IN THIS DRAWING IS CONFIDENTIAL
 AND IS THE INTELLECTUAL PROPERTY OF GUARDIAN
 AVIONICS. REPRODUCTION IN WHOLE OR IN PART
 WITHOUT WRITTEN PERMISSION OF GUARDIAN
 AVIONICS IS PROHIBITED.

DO NOT SCALE DRAWING
 TOLERANCES UNLESS
 OTHERWISE SPECIFIED :

METRIC	IMPERIAL	ANGLES
X ± 1.00mm	X ± .05"	± 1°
.X ± .3mm	.XX ± .01"	
.XX ± .1mm	.XXX ± .005"	

PROJECT:
iPadPro 10.5

DRAWING NAME:
(iPadPro 10.5) DOCK ASSY

SCALE: **1:4**
 DWG# **IPP10.5**

REVISION
A

PRINT DATE
12/7/2017

SHEET:
 13 OF 15

8 7 6 5 4 3 2 1